

PLAN 18277

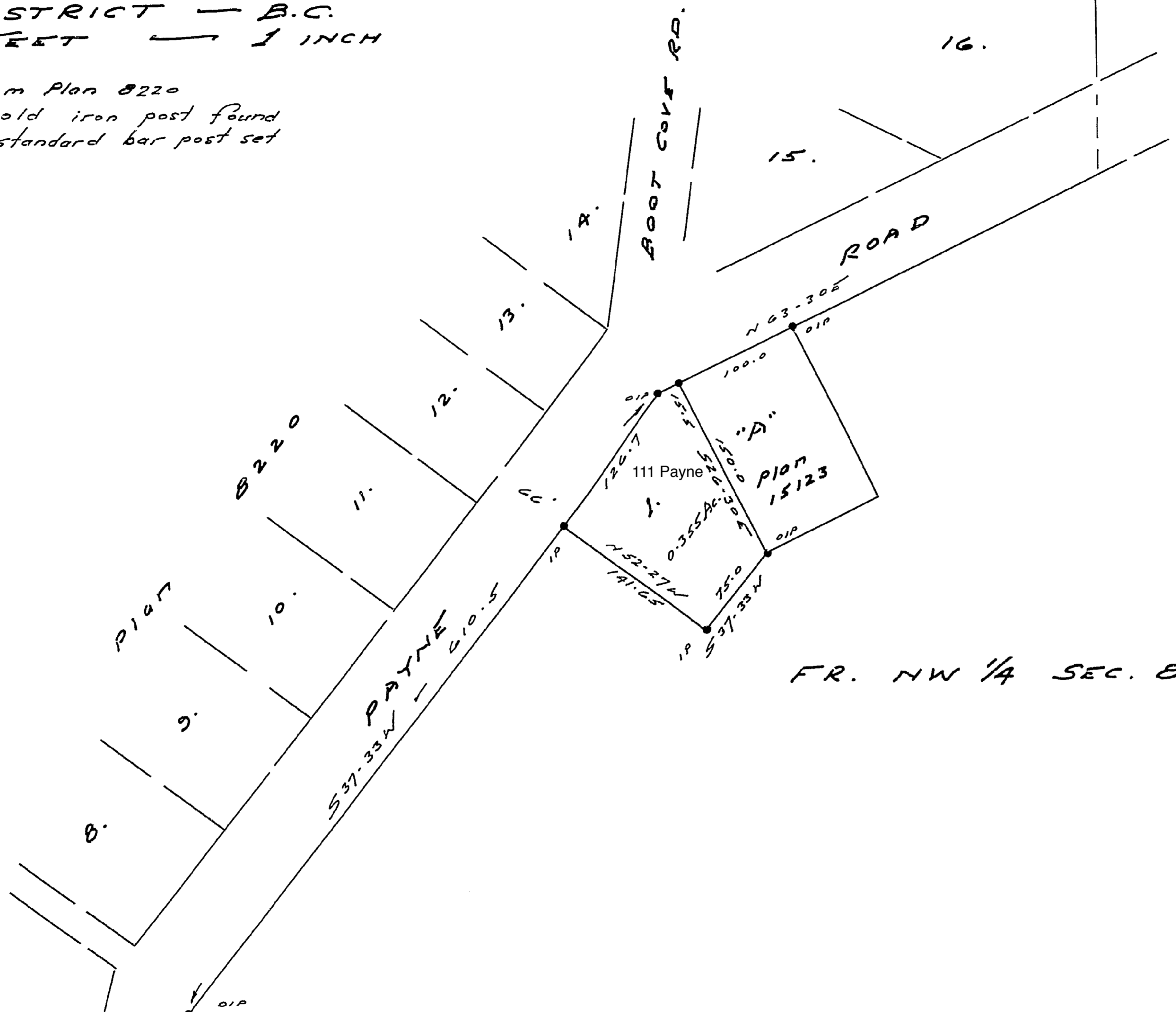
SUBDIVISION PLAN OF
 PART OF FRACTIONAL NW 1/4
 SECTION 8
 SATURNA ISLAND
 COWICHAN DISTRICT — B.C.
 SCALE:— 100 FEET — 1 INCH

LEGEND:—
 Bearings Astronomic from Plan 8220
 • oIP Denotes old iron post found
 • IP " " standard bar post set

Deposited in the "Land Registry Office"
 at Victoria, B.C., this 29th day of OCTOBER, 1965..

J. H. Blunt
 REGISTRAR

343050 F
 ACS



FR. NW 1/4 SEC. 8.

Approved under the "Land Registry Act"
 this 2nd day of September 1965..

M. G. Elston

Acting Assistant Chief Engineer
 Dept. of Highways
 I, Thomas Williams of Sidney, V.I., a British Columbia Land Surveyor, make oath and say that I was present at and did personally superintend the survey represented by this plan and that the survey and plan are correct. The said survey was completed on the 10th day of August 1965.

Sworn before me this
 11th day of August 1965 *T. Williams*
 B.C.L.S.

Charles King
 A Commissioner for taking Affidavits within B.C.

REGISTERED OWNER:	WITNESS:	ADDRESS:	OCCUPATION:
<i>J. C. Moore Director</i>	<i>W. H. ...</i>	<i>Saturna Island</i>	<i>Retiree</i>
<i>W. I. Murray Director</i>	<i>W. H. ...</i>	<i>Saturna Island</i>	<i>Retiree</i>